

dorking rugby club

May 2007

scheme update

---



husband<sup>and</sup>carpenter  
a r c h i t e c t s t d

# Existing 3d

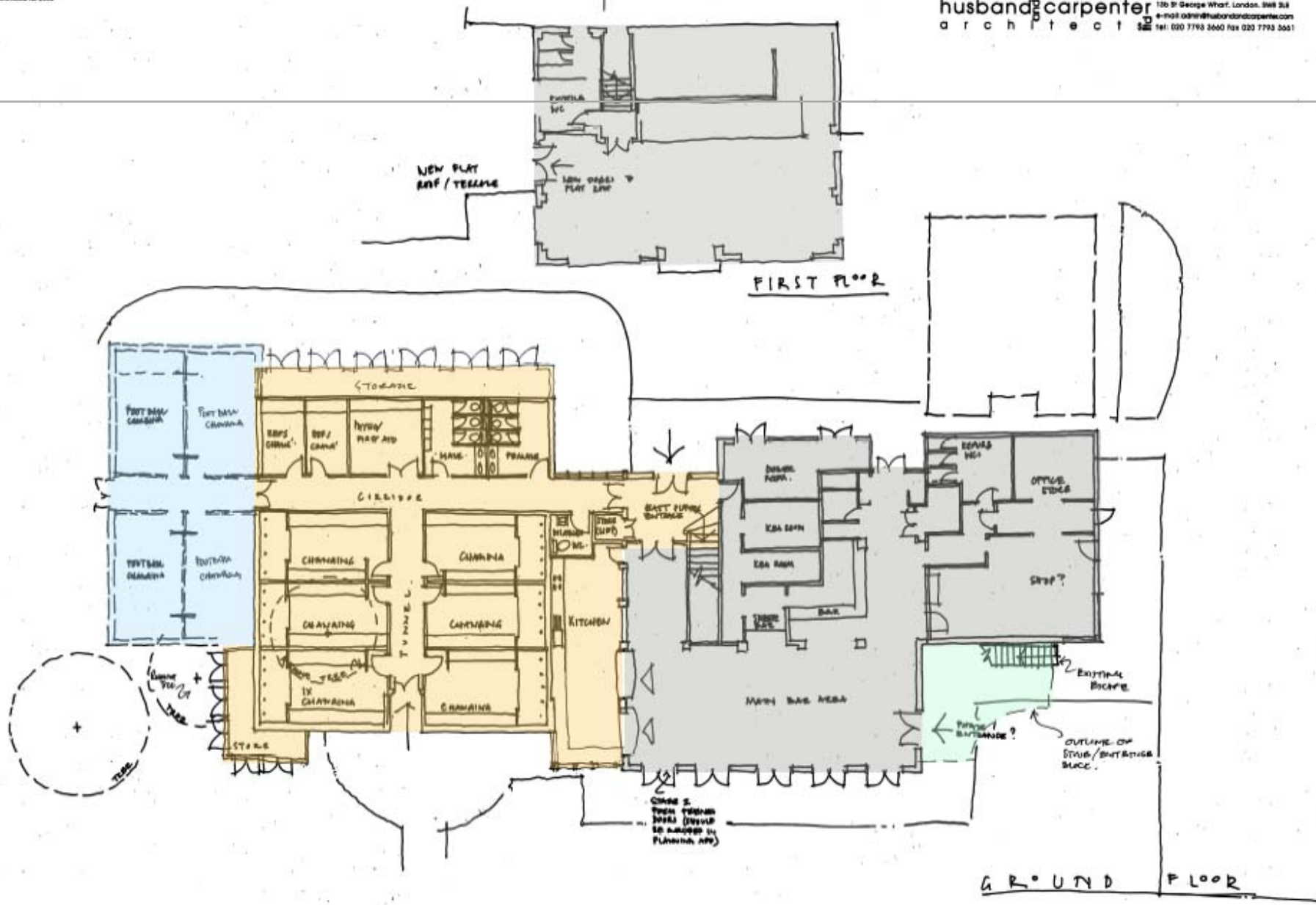
---



# PLANS : Proposed ground & First floor, phase 1

husband & carpenter architects Ltd 2005

husband & carpenter  
architects  
126 St George Wharf, London, SW8 3JL  
e-mail: admin@husbandandcarpenter.com  
tel: 020 7793 2650 fax: 020 7793 2651



PITCHES

**drawing notes**  
This Drawing must not be scaled; only figured dimensions should be used. Large scale Drawings are to be preferred to small scale Drawings in case of discrepancy. This Drawing should not be used for tend transfer. This Drawing should not be used in isolation, if there are any discrepancies or contradictions between this and other information, it should be brought to the Architect's attention. Any adjoining Buildings/Landscapes Features shown are for illustrative purposes only and have not been formally surveyed for this Drawing unless noted otherwise. This Drawing and the information contained therein are the copyright of the Architect. All Rights reserved. No part of this Drawing, or information contained herein, may be reproduced, stored in a retrieval system, or transmitted in any form or by any means, electronic, mechanical, photocopying, recording, or by any information storage and retrieval system, without the prior written permission of Husband & Carpenter Architects Ltd.

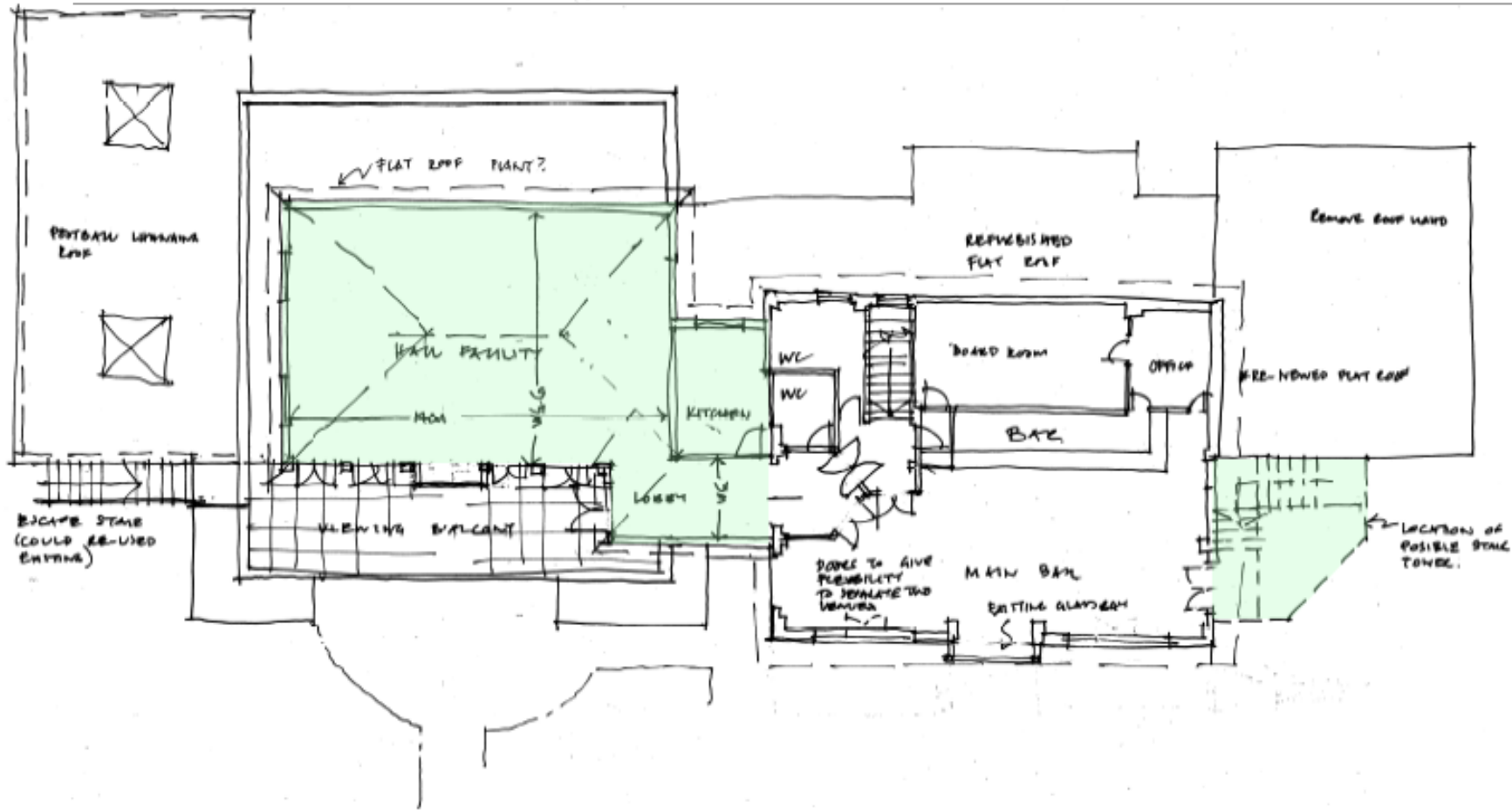
**PROJECT:**  
DORKING RUGBY CLUB  
BROCKHAM, SURREY

**CLIENT:**  
DORKING RUGBY CLUB

**REV A: KITCHEN REVISED**  
**REVISION NOTES:** THE STAIRS IN THE PITCH  
**DRAWING TITLE:**

DATE	SCALE	PROJECT NO.	DRAWING NO.	REVISION
FEB 2007	1:100	DRB01	SK	A

# PLANS: Proposed first floor, phase 2



FIRST FLOOR  
WITH FIRST FLOOR HALL OVER

in use. Large scale Drawings are to be preferred to small scale for land transfer. This Drawing should not be used in isolation. If for illustrative purposes only and have not been formally approved the information contained therein are the copyright of the architect. To more parties, please agree in writing with the architect.

project:  
**DORKING RUGBY CLUB  
BROCKHAM, SURREY**

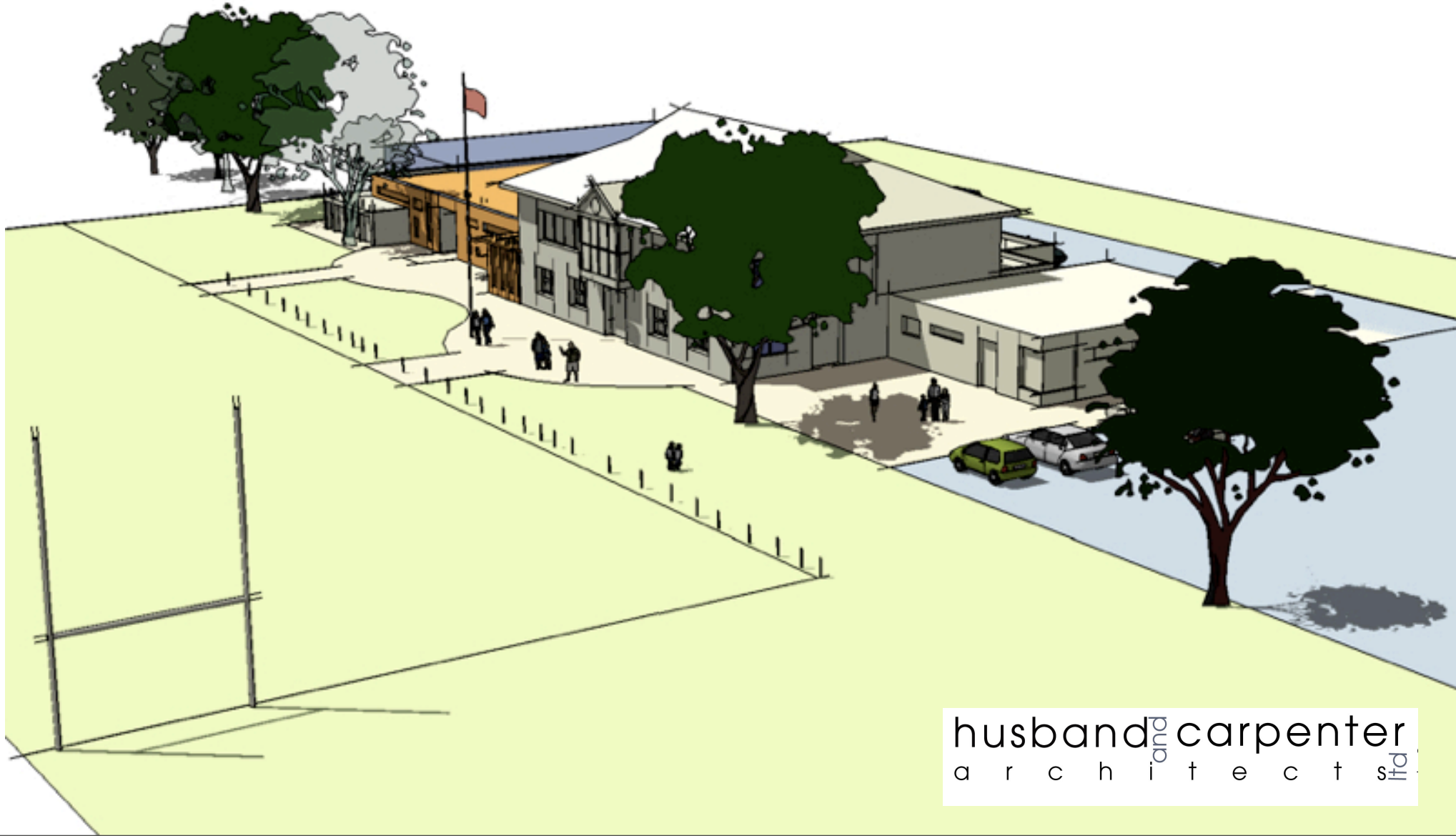
client:  
**DORKING RUGBY CLUB**

Revision notes:				
Drawing title: <b>STAGE ②</b>				
date	scale	project no	drawing no	revision
FEB 2007	1: 100	DRB01	SK 10	A -

# Phase 1

---

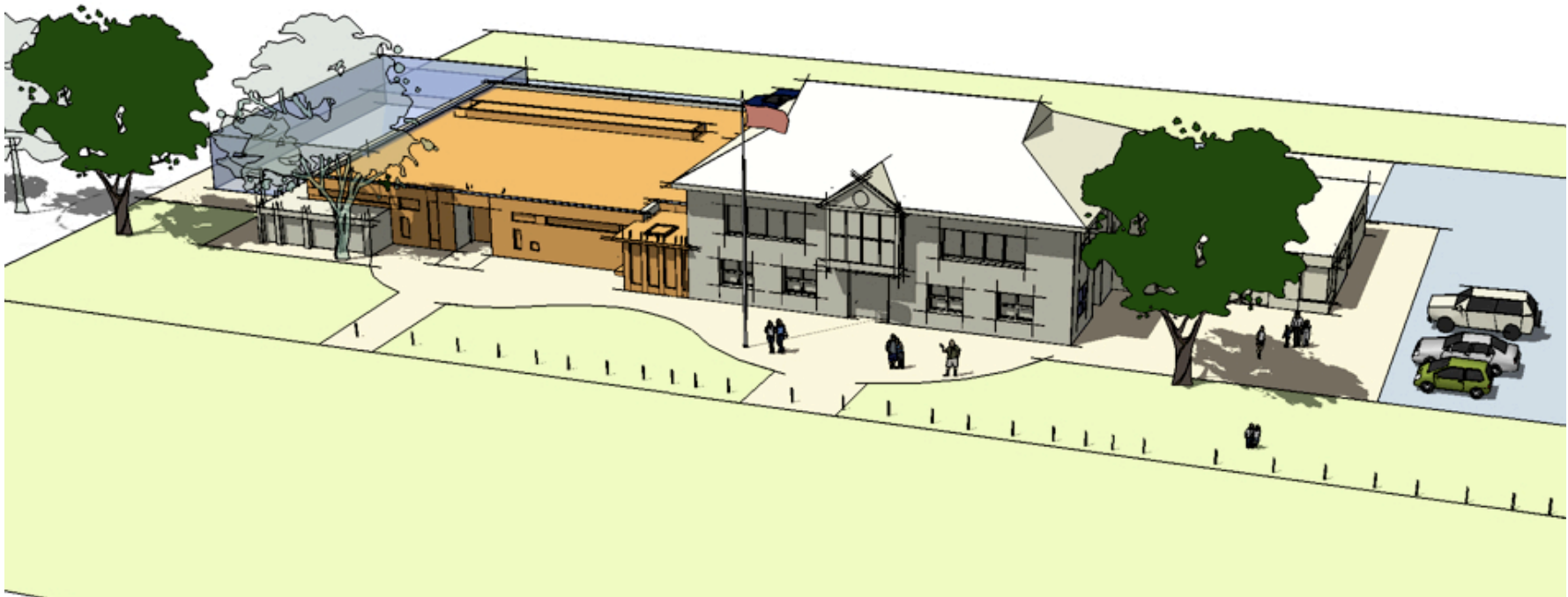
- over view from the south



# Phase 1

---

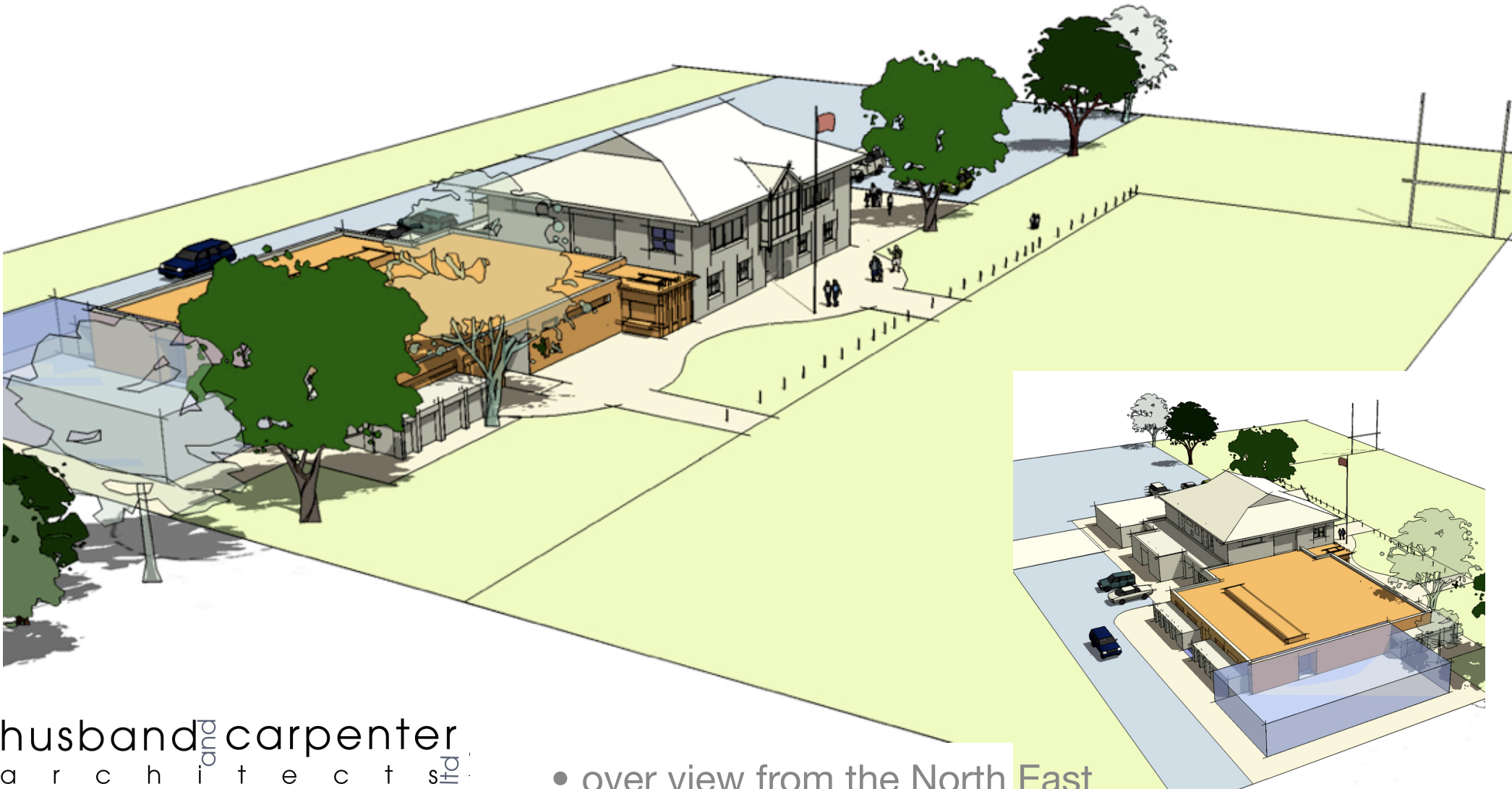
- over view from the south West



# Phase 1

---

- over view from the North

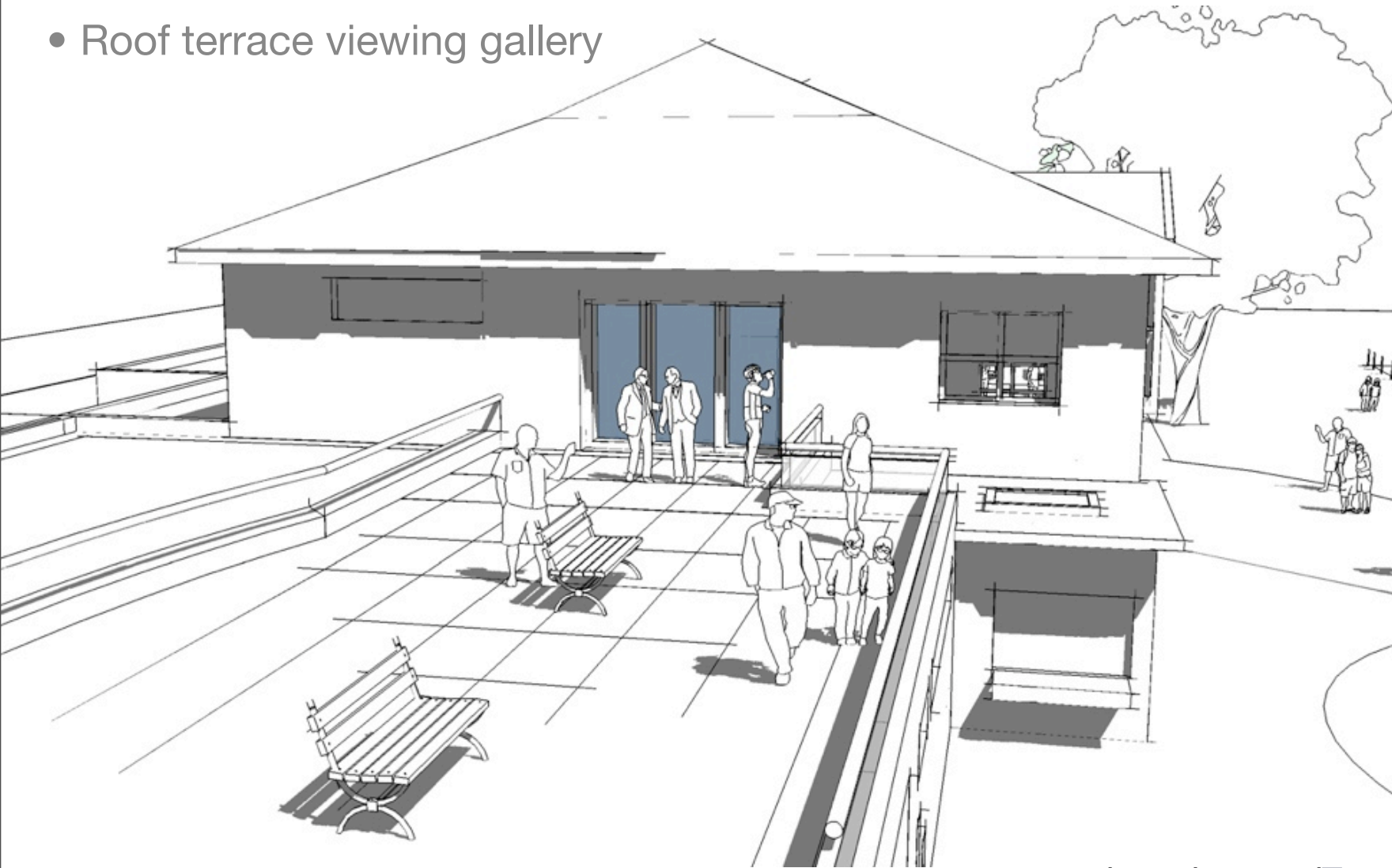


- over view from the North East

# Phase 1

---

- Roof terrace viewing gallery



# Phase 2

---

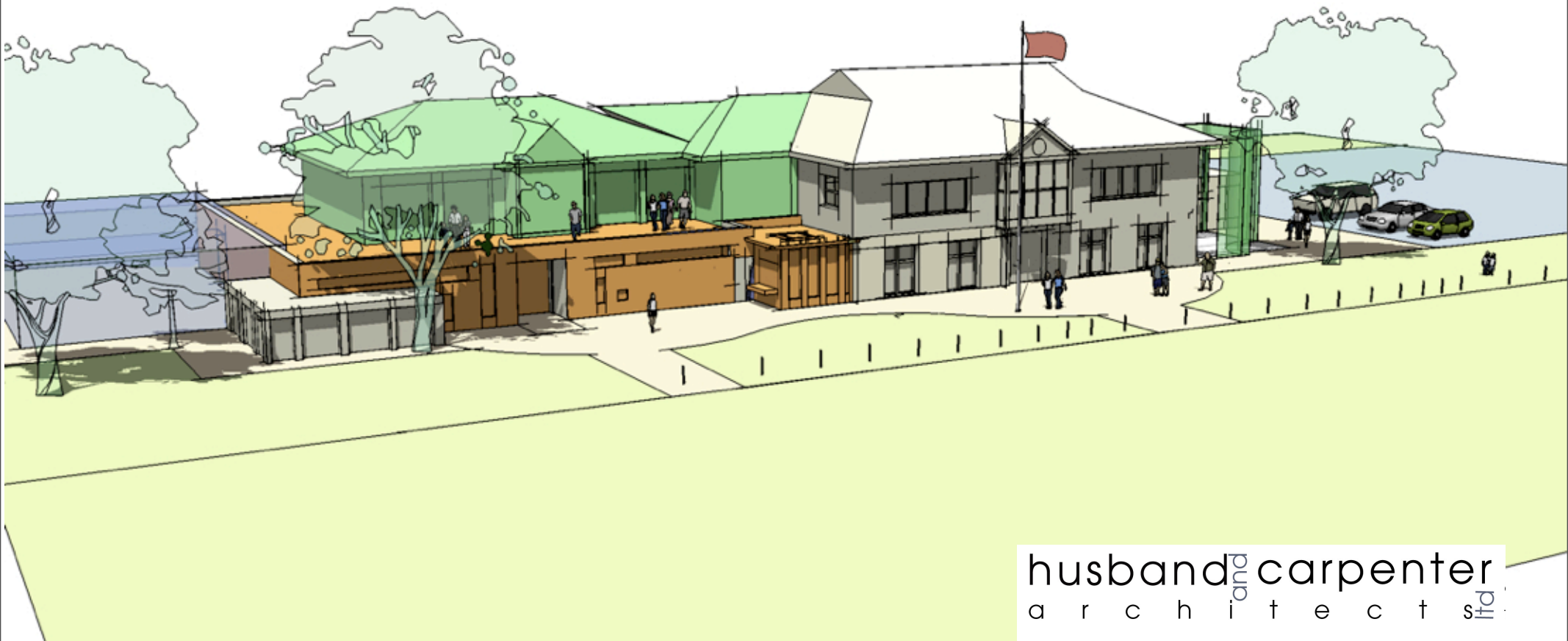
- over view from the south



# Phase 2

---

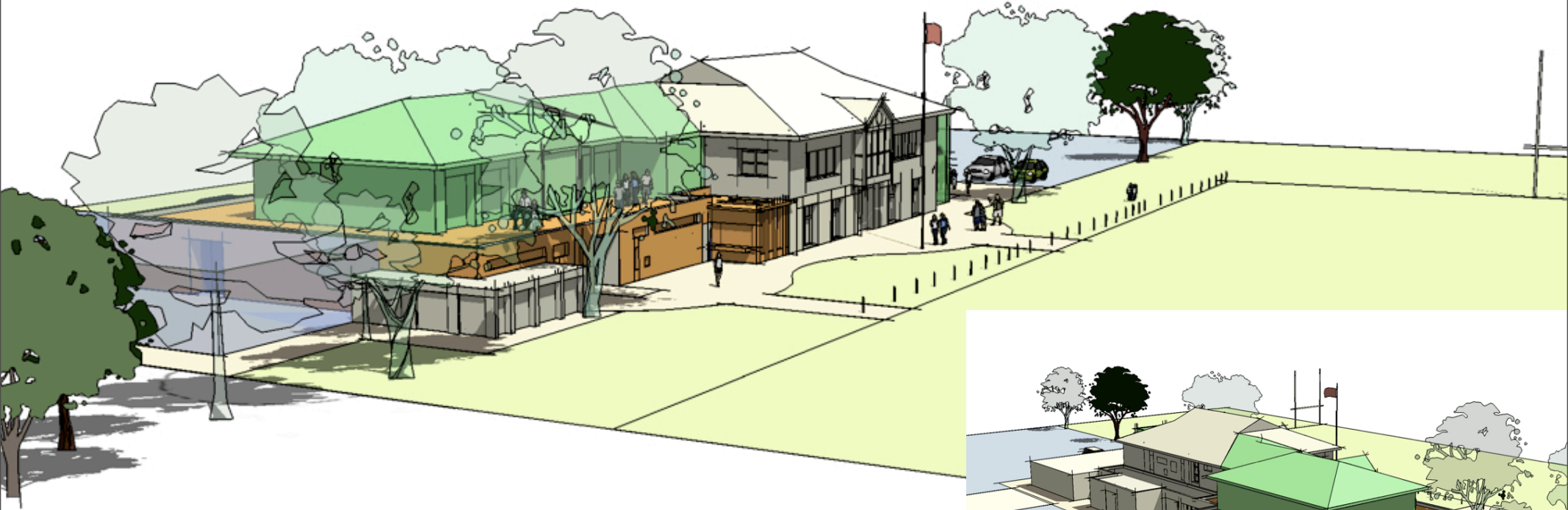
- over view from the south West



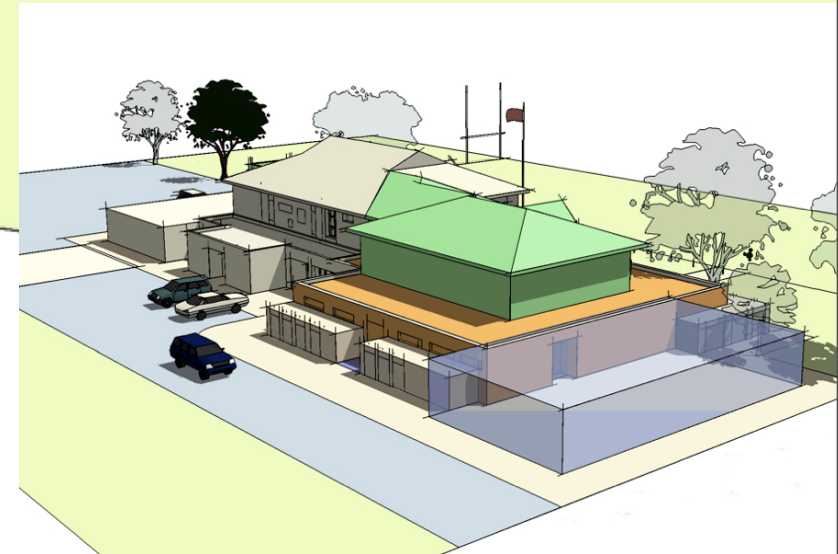
# Phase 2

---

- over view from the North



husband and carpenter  
a r c h i t e c t s t d



- over view from the North East